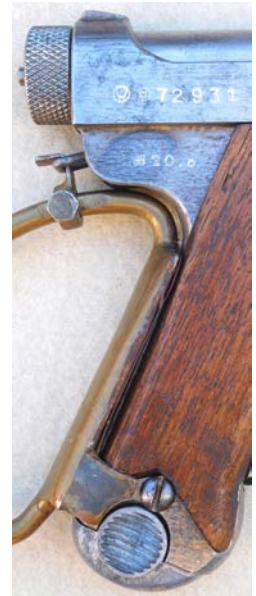


# Home-Made Type 14 Nambu Shoulder Stock

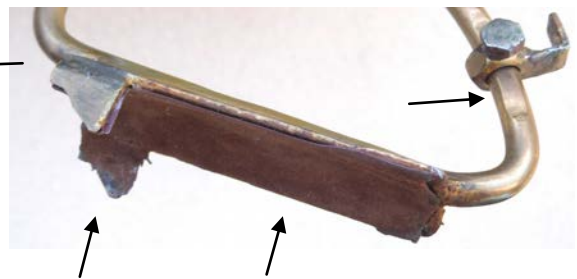
By Dan Larkin

Over many years of collecting Japanese militaria, I have run across several home-made shoulder stocks for use on the Type 14 Nambu pistol. All of them have been of a basic design wherein the stock loosely attaches to the lanyard loop and is held in place by hand pressure against the pistol rear grip strap. The adjustable hook for attachment to the lanyard loop allows this design to be used on Type 14's from any period of manufacture as illustrated below. This simple shoulder stock works well and significantly improves accuracy.

The below images are of two stock design variations which were made of brass rod and wood by a family friend in the 1990s.



Adjustable hook, set screw, and slider stop



Rod flattened for set screw, flanges for grip positioning, and felt glued to backing plate