

## Type 14 First Variation Cutaway Examples

By Dale Crabtree and Dan Larkin

In “Japanese Military Cartridge Handguns 1893-1945,” by Harry Derby and James Brown, there is an excellent section that describes the Type 14 cutaway design (pages 170-172). The book shows images of two identified factory variations in the milled cuts design and lists the serial numbers of seven known cutaway examples (0, 2, 3, 4, 5, 17 and 19). Since the publication of the book in 2003, a few additional cutaway examples have surfaced (8, 9, and another unknown number).

The milled cuts on all observed cutaway examples are on the left side only. Variation 1 pistols have milled cuts that are more extensive than in the Variation 2 pistol. Cutaway pistol serial numbers 0, 4, 8, 9, 17, and 19 are Variation 1, while to date only one cutaway pistol (#2) is noted as Variation 2. The other known cutaway pistols are not identified by the milled cuts variation. No cutaway example is stamped with a manufacturing factory symbol. However, using specific parts designs and inspection marks, it is likely that Variation 1 pistols were manufactured at the Chigusa Factory, and Variation 2 pistols were manufactured at the Kokubunji Factory. More example inspections are needed to confirm this issue.

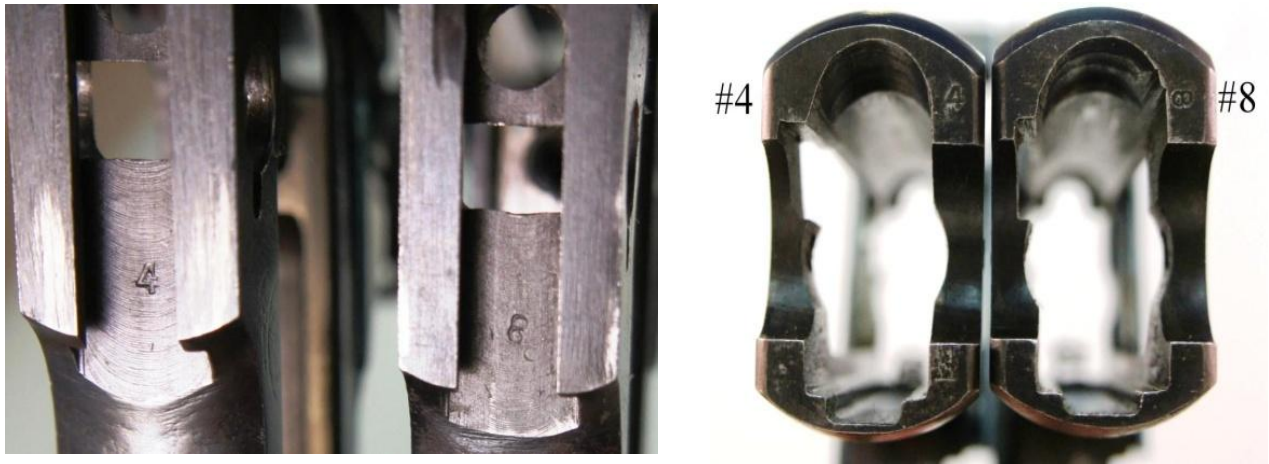
This article provides a detailed comparison of the individual parts of two of these pistols -- #4 and #8. Both examples exhibit the same milled cuts design (Variation 1), and they have the squared front sight base which is consistent with their production at the Chigusa Factory of the Nagoya Arsenal (the front sight bases produced at other factories had round bases). When comparing the location of serial numbers, inspection marks, and tooling marks on the frame and parts, it is likely that the two examples were produced at the same time.



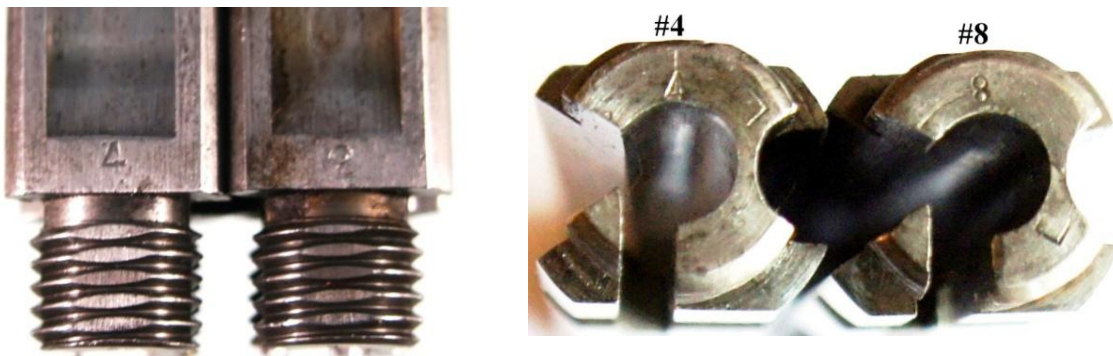
Pistol #8 contains a mixture of parts originally from Chigusa Factory serial number 2. This is interesting in that a cutaway serial number 2 is shown in the Derby/Brown book on page 171 as being made at the Nagoya Nambu Kokubunji Factory. This does beg the question as to what happened to the Chigusa-made cutaway #2? Why were the parts between two Chigusa-made pistols #8 and #2 interchanged? It will be interesting to someday inspect the Kokubunji Factory cutaway #2 to compare the internal parts.

For ease in viewing all images shown below, pistol #4 parts are to the left or at the top, and pistol #8 parts are to the right or at the bottom.

Both examples have the serial number stamped in the trigger guard well of the frame and on the bottom of the frame near the magazine well on the left front side.



Although a number of the parts in pistol #8 are from cutaway #2, only the bolt from pistol #8 carries both serial numbers 2 and 8.

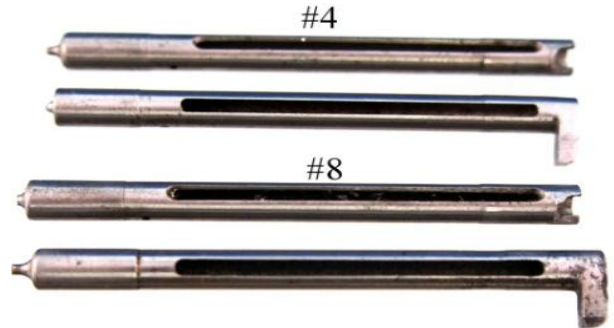


While neither cocking knob carries any inspection marks, they both retain the early large knurling of the gripping surface and narrow 3.0 mm concave circular groove. The use of the 3.0 mm concave circular groove was used by both the Tokyo/Kokura arsenal and the Nagoya Nambu Kokubunji Factories. Additionally, both cocking knobs also retain the original the larger course knurling on the gripping surface (this surface was changed to small finer knurling during Showa 13.12, December 1938). These cocking knobs were likely replaced during the firing pin / magazine safety block addition change retro fit at Kokubunji.

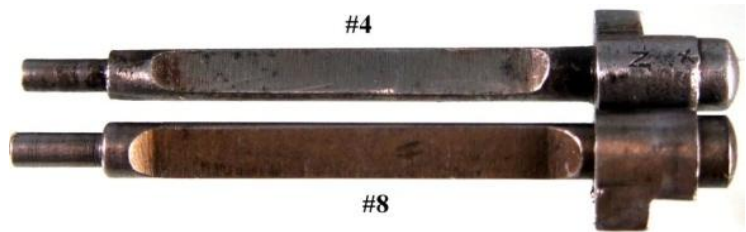


It is also interesting to note that both pistols have been modified with the 73mm firing pin length and related parts changes and the magazine safety block addition (these changes started during the late Showa 6 timeframe).

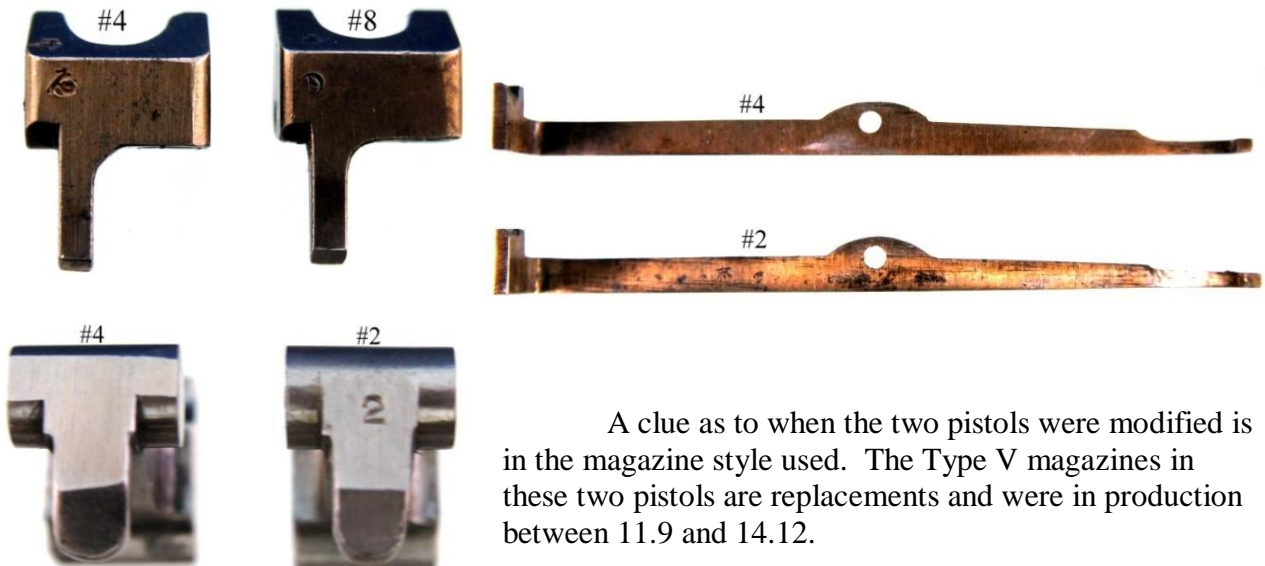
Both pistols were received with broken firing pins (lug broken off), and replacement cutaway pins have been manufactured using original pins.



Both striker guides are the shorter 47 mm, heat treated, flat sided design which was used by Tokyo and Kokubunji. It is interesting to note that the guide for pistol #8 carries the “チ” (Chi) inspection mark which is a Chigusa Factory mark. The guide from pistol #4 is likely a later replacement, as it carries both the “N” and “ナ” (na) inspection marks which were used during the Showa 15 and 16 period.



Most of the parts in both pistols associated with the changes carry Kokubunji Factory inspection marks. The use of the Kokubunji inspection marks on many of the original Chigusa parts shows that they passed inspection at Kokubunji during the change retro fit.



A clue as to when the two pistols were modified is in the magazine style used. The Type V magazines in these two pistols are replacements and were in production between 11.9 and 14.12.

While pistol #4 has a matching cutaway magazine, pistol #8 has cutaway magazine #18. Both magazines carry the “TO” inspection mark (also common to Type V magazines in the 11.9 to 14.12 timeframe). However, the location of the serial number is different between the two. Magazine #4 has the serial in the normal position on the back spine near the bottom of the housing. Magazine #18 has the number stamped on the back side of the left finger grip of the magazine base itself.



This is the inspection mark legend for the following pistol parts chart; reference “Japanese Military Cartridge Handguns 1893-1945,” by Harry Derby & James Brown	
東	TO (Tokyo) used by both Tokyo (1932-1934 Showa 7-9) and Kokubunji (1933-1944 Showa 8-19) Arsenals
N	N used at Kokubunji Arsenal (1939-1941 Showa 14-16)
チ	Chi (Chigusa) used at Nagoya Arsenal/Chigusa factory (1932 Showa 7)
ナ	na used by both Tokyo (1931-1932 Showa 6-7) and Kokubunji (1940-1941 Showa 15-16) Arsenals
ウチ	UCHI used at Nagoya Arsenal/Chigusa factory (1928 Showa 3) and Tokyo Arsenal (1930-1932 Showa 5-7)
□	Square used at Nagoya Arsenal/Chigusa factory 1926-1932 Showa 2-7)
◇	Pentagon used at Nagoya Arsenal/Chigusa factory 1926-1932 Showa 2-7)
條	JYO used at Kokubunji (1935-1936 Showa 10-11)
志	SHI used at Kokubunji (1935-1936 Showa 10-11)
⓪	To (encircled) used at Kokubunji (1939-1941 Showa 14-16)

The following chart shows the observed characteristics of the parts in these two pistols.

Part	Pistol #4					Pistol #8				
	SN	Marks	Cuts	Finish	Notes	SN	Marks	Cuts	Finish	Notes
Frame - right side				blue					blue	
Right frame grip area				blue					blue	
Frame - left side			yes	blue				yes	blue	
Left frame grip area				blue					blue	
Right grip	4	東			25 grooves; pencil #		東			25 grooves
Left grip	4		yes		25 grooves; pencil #			yes		25 grooves
Barrel housing	4		yes	blue		2		yes	blue	
Bolt	4		yes	polished		2 & 8		yes	polished	
Extractor				polished					polished	
Cocking knob	4		yes	blue		2		yes	blue	
Striker			yes	polished	73mm		東	yes	polished	73mm
Striker guide		ナ, N		straw	47mm flat		子		straw	47mm flat
Locking block		東, ㊦		polished		2	㊦ ㊧		polished	
Sear bar		東		straw		2	東, 條		straw	
Sear bar pin				straw					straw	
Safety lever				straw		740	東		straw	
Magazine latch				straw			條		straw	
Mag. Safety block		條, 志	㊦	straw			東, ㊦		straw	
Trigger Guard	4		yes	blue	STG	8		yes	blue	STG
Trigger		東, ㊦	yes	straw		8	東, ㊦	yes	straw	
Magazine	4	東	yes	nickel	Type V; # on spine	18	東		nickel	Type V; # on base

This study only compares two cutaway examples from the same factory. As a few other cutaway examples are known to be in collections, we would like to hear from the owner of any Type 14 factory cutaway example. From one image viewed, the cutaway example appears to remain in its original configuration without the firing pin and related parts changes and without the magazine safety block addition but is missing some original parts. The detailed inspection and comparison of any additional cutaway example would contribute to what little we know about these very rare variations of the Type 14 Nambu pistol.

Please, if you own or know the location of any Type 14 cutaway example, contact one of us. We look forward to hearing from any collector on this topic. You can reach Dale at 850-206-7431 or email at [crabtreeda@cox.net](mailto:crabtreeda@cox.net). And Dan can be contacted at 707-443-4223 or email at [danlarkin@suddenlink.net](mailto:danlarkin@suddenlink.net).

